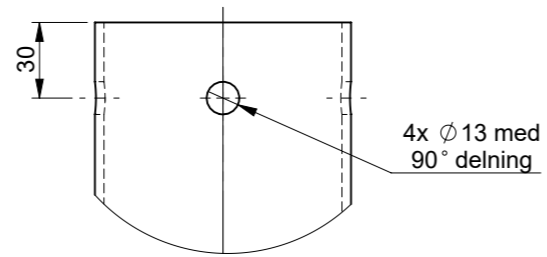
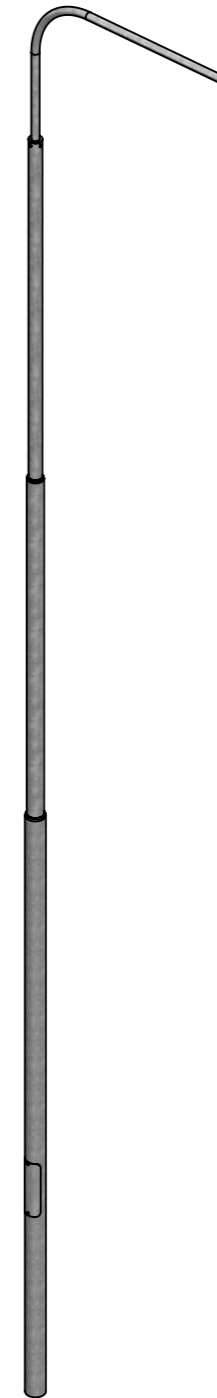


Topparm dold i denna vy



4x Ø 13 med  
90° delning

DETAIL A  
SCALE 1 : 3



### Övriga anvisningar

- Tillverkad enligt: SS-EN 40
- Varmförzinkad enligt: SS-EN 1461
- Där annat inte anges gäller generell tolerans.
- Skarpa kanter brutna
- Övrig dokumentation
  - I0006 - Upphållningshål stolpar



This drawing and all appurtenant matter shall remain the property of Mora Mast AB. They shall not be copied or reproduced in any form without our written permission, either in their original state or with any changes be copied or manufactured, shown to or in any other way communicated to or handed over to any part.

Material:	Generell tolerans:	Ritad av:	Datum:	Skala:
	SS-EN 40	TH	2013-02-22	1:55
Benämning:	Godk. av:	Godk./Datum:	Format:	
MMSH120 E20	BA	2023-03-03	A3	
Ritningsnr:	Vikt:	Rev:	Status:	Blad:
7780740	162.74 kg	C	Released	1/1