

INSTALLATION MANUAL UNIMI-1BASE™

Unimi-1Base™ pre-cast concrete foundation with adaptor for GARO LS4



Unimi Solutions	Kap -	Kostnb. K00717	Dok namn Installation description				
Mallens filnamn Produktbeskrivning.doc	Dok dat -	Current filename	Valid from 2014-02-06	Rev 02	Approved 2014-02-06	Sid 1 (5)	

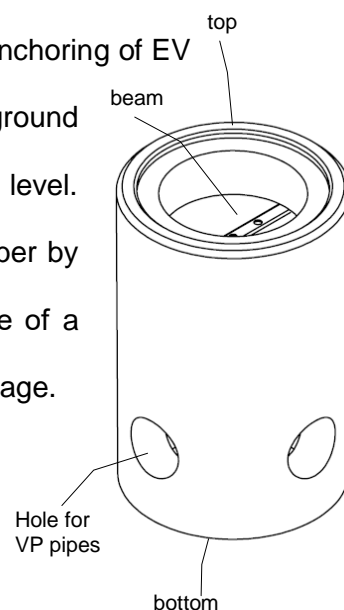
INSTALLATION MANUAL UNIMI-1BASE™

Related document:

http://www.garo.se/storage/ma/bf2edf982ed641a394f8d77ee6084951/214ebfbacf9c4480a2e80415c0fa312c/pdf/3/352826_02_Manual%20LS4%20ENG%20380137%20ID1701.pdf

- The Unimi-1Base™ foundation member is designed for anchoring of EV charging posts. The foundation member is placed in the ground so that the top is aligned to the existing/targeted ground level. The EV charging post is attached to the foundation member by use of a designated adapter, or is made "waiting" by use of a cover member if the charging post will be fitted at a later stage.

- Weight: ca 100 kg / 220 lb
- Hight: ca 600 mm / 24 in
- Outer diameter: 400 ± 2 mm / 16 in



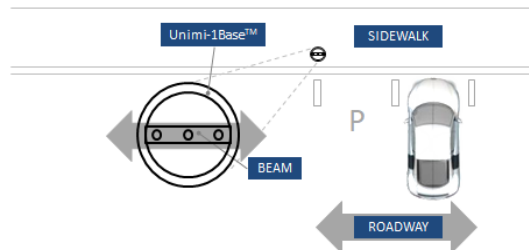
- Pull VP pipes for cable/cable thread to the site.
- Dig a hole to fit the foundation. If you are in a cold climate zone, make sure to prepare the bed for frost/freezing, i.e. crush. Adjust the depth of the hole so that the foundation's top will be in level with the surrounding ground/pavement.
- Use the provided VP-covers for those holes on the foundation sides that will not be in use.

Unimi Solutions <small>Mallens filnamn Produktbeskrivning.doc</small>	<small>Kap -</small> <small>Dok dat -</small>	<small>Kostnb.</small> K00717	<small>Dok namn</small> Installation description				
		<small>Current filename</small>	<small>Valid from</small> 2014-02-06	<small>Rev</small> 02	<small>Approved</small> 2014-02-06	<small>Sid</small> 2 (5)	

INSTALLATION MANUAL UNIMI-1BASE™



Orientation of the foundation member and metal beam
[view from above]



- Lower the foundation into the hole – the beam can be used for lifting. The foundation shall be upright and perpendicular. Rotate the foundation so that the beam is oriented parallel to the curbside/street/parking. The patented design makes it possible to adjust the charging poles orientation using the adapter element.
- Attach VP pipes with cables/thread to the side of the foundation member. Specific protection can be installed according to the figures at the end of this document.

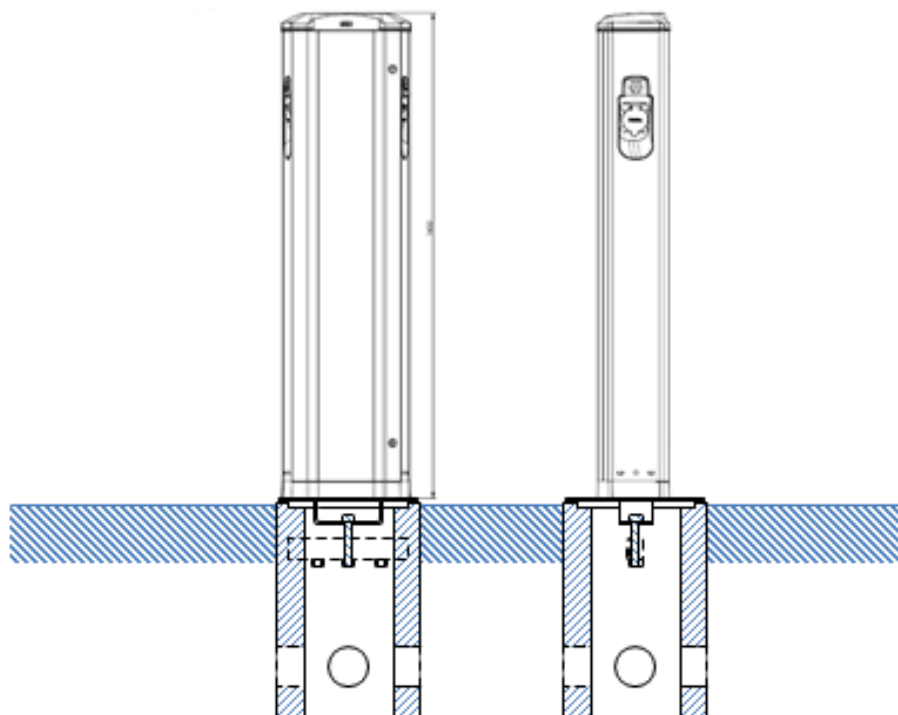


- Filling material is packed 2-3 times with a packing machine until the desired ground level is obtained. Avoid having filling material inside the foundation.

Unimi Solutions	Kap -	Kostnb. K00717	Dok namn Installation description				
Mallens filnamn Produktbeskrivning.doc	Dok dat -	Current filename	Valid from 2014-02-06	Rev 02	Approved 2014-02-06	Sid 3 (5)	

INSTALLATION MANUAL UNIMI-1BASE™

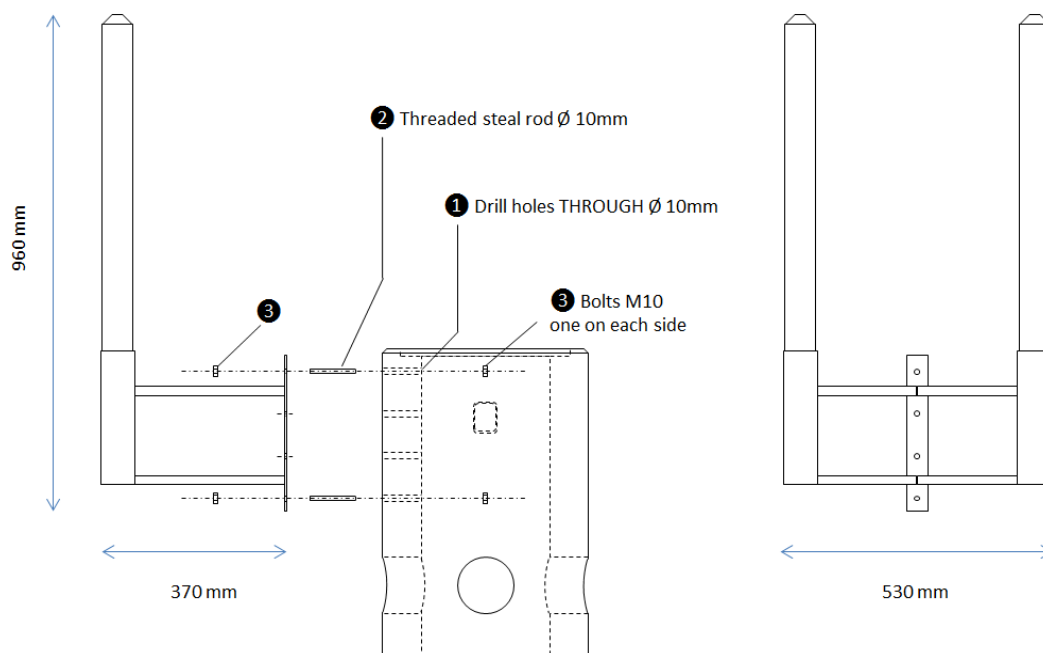
- Mount the adapter to the foundation member using the 12 mm bolt and brick (both attached to adaptor by tape). The beam inside the foundation member has a weld nut for the bolt to be fitted.
- Mount the LS4 charger by fitting the charger to the four threaded rods of the adaptor. Tightly secure the EV charging pole to the adaptor.



- Continue installation of station according to GAROLS4 Installation manual

Unimi Solutions <small>Mallens filnamn Produktbeskrivning.doc</small>	<small>Kap</small> -	<small>Kostnb.</small> K00717	<small>Dok namn</small> Installation description				
	<small>Dok dat</small> -	<small>Current filename</small>	<small>Valid from</small> 2014-02-06	<small>Rev</small> 02	<small>Approved</small> 2014-02-06	<small>Sid</small> 4 (5)	

INSTALLATION MANUAL UNIMI-1BASE™



Requirements for personal safety

- Pre-cast foundation member must be lifted in place using a vehicle. Use the beam to attach lifting devices.

Unimi Solutions Mallens filnamn Produktbeskrivning.doc	Kap -	Kostnb. K00717		Dok namn Installation description			
	Dok dat -	Current filename		Valid from 2014-02-06	Rev 02	Approved 2014-02-06	Sid 5 (5)