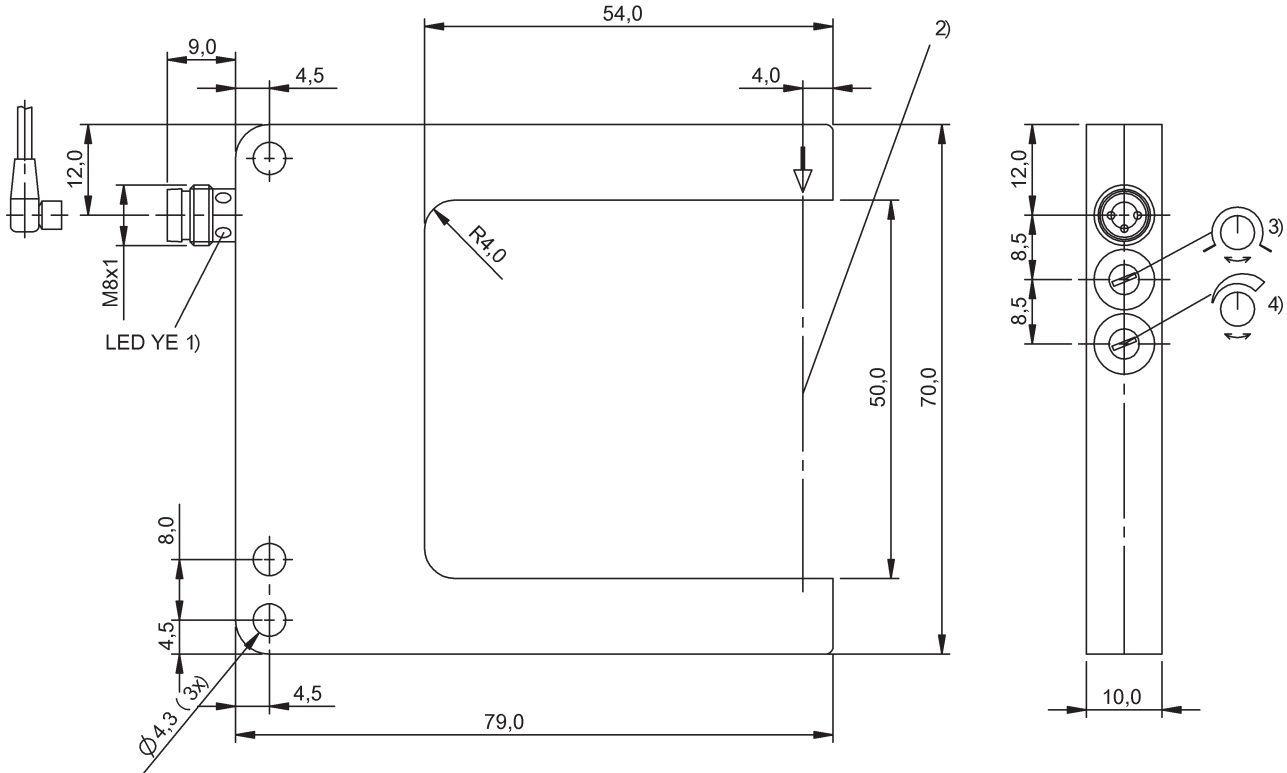


Slot sensor

**BGL 50A-001-S49**  
**BGL001J**

**BALLUFF**



1) Output function 2) Optical axis 3) Light-on / Dark-on 4) Sensitivity

- Slot sensor
- Series A
- LED, red light
- 50 mm



**General attributes**

Adjuster Potentiometer, 270° (2x)  
 Approvals / Conformity CE  
 Basic standard cULus  
 Enclosure Type per IEC 60529 IEC 60947-5-2  
 Indicator IP67  
 Polarity reversal protected Output function - LED YE  
 Series Yes  
 Setting Series A  
 Short circuit protected Sensitivity  
 Trademark Light-on/dark-on  
 GLOBAL Yes

**Electrical attributes**

Connection type Connector  
 Eff. operating current Ie 200 mA  
 Eff. operating voltage Ue DC 24.0 V  
 Electrical version DC, direct current  
 Hysteresis H max. 0.150 mm  
 Load capacitance max. (at Ue) 1.00 µF  
 No-load current max. Io at Ue 35 mA  
 Operating voltage UB max. DC [V] 30.0 V  
 Operating voltage UB min. DC [V] 10.0 V  
 Rated insulation voltage Ui 75 V DC  
 Ripple max. (% of Ue) 10 %  
 Switching freq. f max. (at Ue) 1500 Hz

Switching function NO/NC  
 Switching output PNP (1X)  
 Turn on time ton max. 0.333 ms  
 Voltage drop Ud max. (at Ie) 3.0 V

**Mechanical attributes**

Ambient temperature Ta max. 60 °C  
 Ambient temperature Ta min. -10 °C  
 Connector type M8x1-S49  
 Fork width 50 mm  
 Housing material GD-Zn  
 Length 1 10.0 mm  
 Length 2 88.0 mm  
 Length 3 70.0 mm  
 Mounting type Screw M4  
 Repeat accuracy lateral max. 40 µm  
 Sensing face material Glass  
 Style Slot, straight connection  
 Surface protection Painted

**Optical attributes**

Ambient light max. 5,000 Lux  
 Light spot size, typical Ø1.5 mm light exit  
 Light type LED, red light  
 Principle of optical operation Through-beam  
 Switching function, optical NO/NC: dark-on/light-on  
 Wavelength 636 nm

Slot sensor

**BGL 50A-001-S49**  
**BGL001J**

**BALLUFF**

**Remarks**

Order accessories separately.

For additional information, refer to user's guide.

Factory default setting for switching output: Normally open.

Reference object (test target): Steel sheet metal, 50 x 50, thickness 0.5 mm, lateral approach.

The sensor is functional again after the overload has been eliminated.

Only for NFPA 79 applications (machines with a supply voltage of maximum 600 volts).

Device shall be connected only by using any R/C (CYJV2) cord, having suitable ratings.

