

Floor box system: 8908B

Specification:

Item No: 8908B
 Product line: Floor box system
 Units: 8
 Mounting (qty): 8x SCHUKO socket with VDE certification
 Construction: Square
 Ground: Suitable for screed
 Type of inst.: Flush mounted
 Lid character.:

- Own floor covering applicable
- Hinged
- Removable
- Closable with plugged in plugs

Floor cover. recess: 15mm
 Environment: Dry to moist
 Protection: IP20
 EAN: 4058796002797

Technical data:

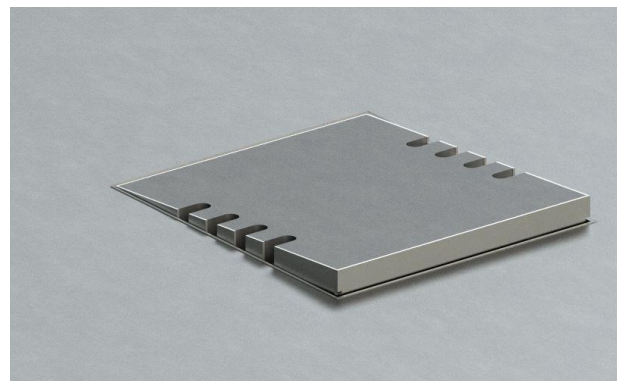
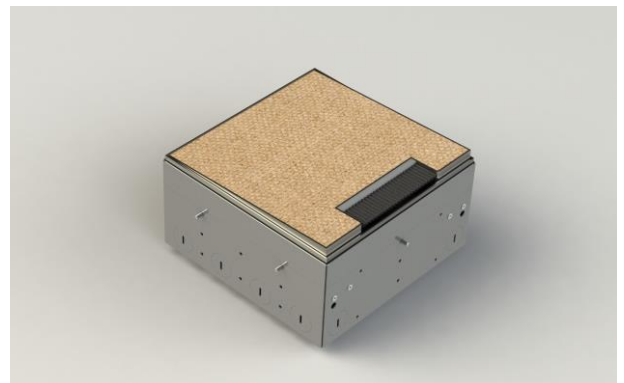
Material:

- Adapter box made of galvanized steel sheet
- Lid made of stainless steel (1,5mm / 1.4301)
- Equipment carrier made of aluminum

 Colour: Stainless steel
 Surface: Grindet
 Weight: 2800g
 Dimensions: 211 x 205 x 103mm
 Install. Dim.: 211 x 205 x 103mm
 Height-adjustable: 30mm
 Supply line: 4x front; 4x lateral; 4x back; 4x bottom; Ø 25mm
 Load: 120kg

Features:

Delivery cond.: Complete and pre-assembled
 Opt. attachments: Item No. 89NS -Leveling kit for height correction



Errors and technical changes reserved.